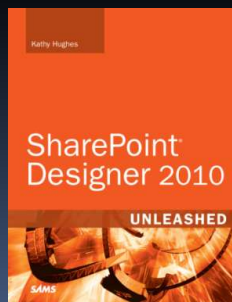


NOW AND THEN...

Comparing common functionality and usability between SharePoint Server 2007 and SharePoint Server 2010



By Kathy Hughes
SharePoint Server MVP
19th October, 2009, PST

User Interface

- Usability much improved
- New ribbon interface makes it easy to access editing tools and interact with content
- AJAX interface means less post backs for common editing practises, like editing a document's properties
- DEMO – Compare UI
 - http://www.youtube.com/watch?v=moBE5foVC_A&feature=Playlist&p=FDoBEEEg47266904

Setting User Alerts

- You can now set alerts on pages within a SharePoint site
- You can configure SMS alerts
- DEMO – Compare alerts
 - http://www.youtube.com/watch?v=hgkayzFP_Lo&feature=PlayList&p=FDoBEEEg47266904

Publishing Content Types

- A limitation with SharePoint Server 2007 is that you cannot OOB share content types between site collections and/or Web applications
- In SharePoint Server 2010 you can publish content types to other site collections and Web applications!
 - Republish Updates
 - Unpublish (retract)
 - DEMO – Content types
 - <http://www.youtube.com/watch?v=SDolAuoFfRY&feature=Playlist&p=FDoBEEE947266904>

Email Integration

- On the surface hasn't really changed
 - Can still connect lists and document libraries to Outlook (2007 and 2010)
 - Document libraries in Outlook are still read-only
- Check-out adds documents to SharePoint drafts folder on client
- **SharePoint Workspace** (aka Groove) offers additional offline access
- Emails sent to document libraries are still received in EML format

List enhancements

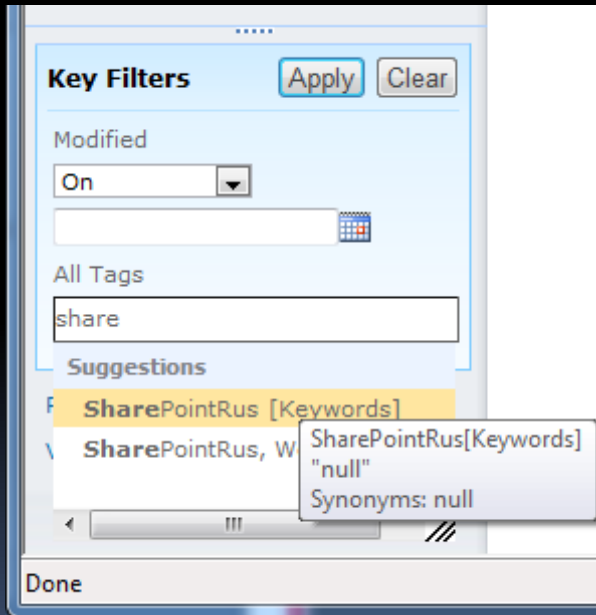
- OOB support for large lists
 - Controlled via Central Administration, throttling limits
- Can now choose via Web interface to not allow duplicate values in lists
 - This is a huge bonus, I am often asked about doing this in SharePoint Server 2007
- Multiple columns/fields in Lookup field type
- OOB ratings
- OOB validation settings on lists and libraries
 - Still have calculated columns too
- Multi-stage retention policies (set at site collection level, site level or list/library level)
- DEMO – lists
 - <http://www.youtube.com/watch?v=7PGCSyjTdKM&feature=Playlist&p=FD0BEEE947266904>

Document Sets

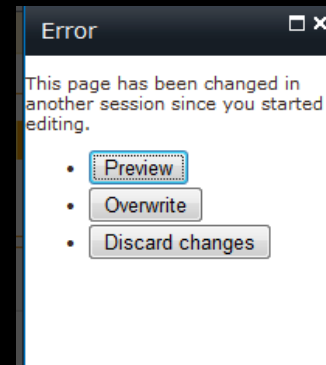
- Based on folder
- Can run workflow on all documents within Set concurrently
 - Create custom Document Set workflows
- Can download Document Set as ZIP
- Customize Welcome page
- DEMO – Document Sets
 - <http://www.youtube.com/watch?v=UuoKC5XwjvA&feature=Playlist&p=FDoBEEE947266904>

Metadata driven navigation

- New key terms can drive filtering and navigation



Page management



- Page (publishing) library now supports folders
 - More easily manage taxonomy and hierarchy
- Change page layout 'in-place' via ribbon
- Improved editing 'collision' management
- DEMO – Pages
 - <http://www.youtube.com/watch?v=LgL6NPQzMos&feature=PlayList&p=FDoBEEEg47266904>



New enriched site templates

- New document center
 - Supports features like content rollup and document ID
- Wiki sites and Wiki Enterprise site template
 - Makes pages and content management a lot more flexible
- Group Workspace template
 - Integration with calendars and resources (i.e. Meeting rooms, etc.) synched via Exchange

Master Pages and Themes

- Themes are now inheritable throughout site collections!
- You now have the option to apply a site master page to _layouts pages!

Master Page Setting for Application _Layouts Pages

Choose whether or not to allow the pages in the _Layouts folder to reference site master pages. Pages in the Application _Layouts folder are available to all sites in the farm.

If this setting is on, most of the pages in the _Layouts folder will reference the site masterpage and show the customizations that have been made to that master page. When the master page is not supported or unavailable, the _Layouts pages will reference the default SharePoint look and feel.

Application _Layouts pages reference site master pages:

Yes No

Central Administration

- Much improved Web interface
 - Less cluttered, easy to find objects
- Granular backups and restores via Web interface
- Manage everything via the ribbon
- No more Shared Service Provider (SSP)
 - All done at the same level
 - Service applications make life easy!
- DEMO – Central Administration
 - <http://www.youtube.com/watch?v=sQhgPfyhto&feature=Playlist&p=FDoBEEE947266904>

Analytic Reports

- You can now view via the Web interface historical reports from a year back!
 - Limited to 30 days in SharePoint Server 2007
- You can customize reports using Excel Web Services
 - Get saved in custom reports library
- DEMO – Analytical reports
 - <http://www.youtube.com/watch?v=93ZGF2VVAyw&feature=PlayList&p=FDoBEEE947266904>

Q&A

- Way too many new features for just one presentation, so...
- www.kathyhughes.com – for future updates
- Upcoming (known) SharePoint Server 2010 Events in Australia:
 - SharePoint 2010 Extravaganza, Microsoft, Sydney, 28th October, 2009, 6pm-9pm, Kathy Hughes, Aaron Saikovski, Alistair Speirs – <http://sbtug.com>
 - Office DevCon 2009 Australia, 31st October/1st November, 2009, Brisbane, Queensland, Australia – <http://www.officedevcon.com.au>
 - SharePoint Saturday Melbourne, 14th November, 2009
 - Sydney SharePoint User Group, SharePoint Blind Date, Kathy Hughes, November

SharePoint Designer 2010 Unleashed

- Due out 2010!

